



36 Eskdale Close

, WEMBLEY, HA9 8XB
£2,200 Per Month

THREE BEDROOM SPLIT LEVEL MAISONETTE WITH OWN REAR GARDEN Located within walking distance to South Kenton & Preston Road tube stations is this extremely spacious three bedroom split level Maisonette offered for let in good condition. Some of the further benefits include an own rear garden, new kitchen and bathroom, gas central heating, double glazing, AVAILABLE NOW.

- THREE BEDROOMS
- SPLIT LEVEL MAISONETTE
- GAS CENTRAL HEATING
- DOUBLE GLAZING
- NEW KITCHEN
- NEW BATHROOM
- AMPLE STORAGE THROUGHOUT
- OWN REAR GARDEN

Viewing

Please contact our Bryan Maher & Co Office on 020 8904 8904 if you wish to arrange a viewing appointment for this property or require further information.



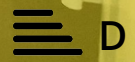
3



1



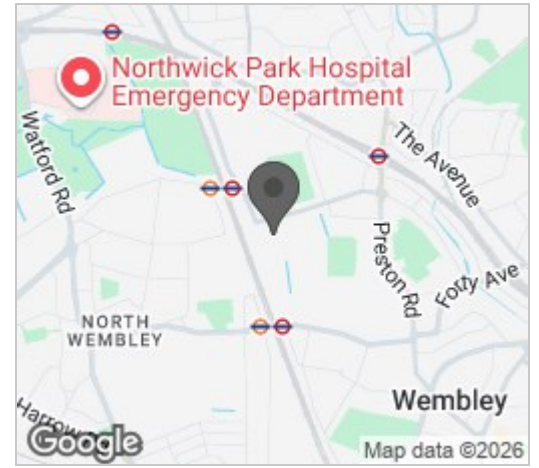
1



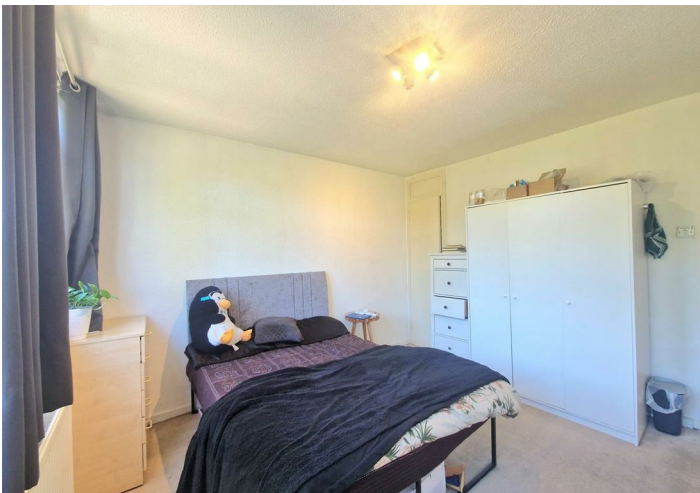
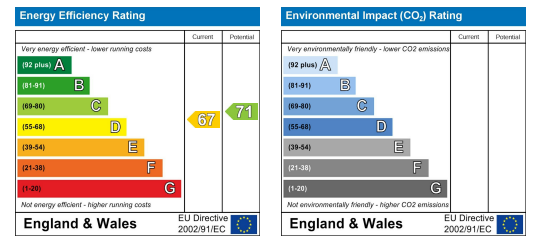
Floor Plan



Area Map



Energy Efficiency Graph



These particulars, whilst believed to be accurate are set out as a general outline only for guidance and do not constitute any part of an offer or contract. Intending purchasers should not rely on them as statements of representation of fact, but must satisfy themselves by inspection or otherwise as to their accuracy. No person in this firm's employment has the authority to make or give any representation or warranty in respect of the property.

